

TickerPro Server User's Guide

TickerPro Server Installation	1
TickerPro configuration file	3
Microsoft Message Queue Server (MSMQ)	4
Using TickerPro with Omega Research ProSuite 2000i.	4

This document describes the common steps needed to install, configure and use the TickerPro Server software product.

TickerPro Server Installation

To launch the installation do the following operations:

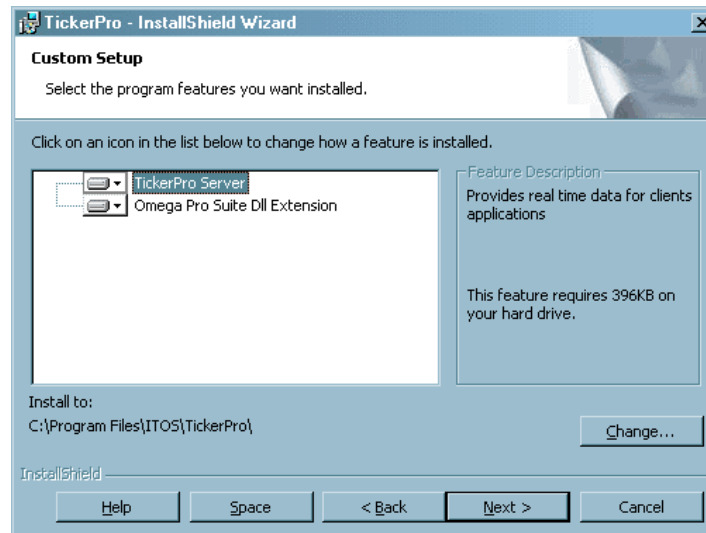
1. Using Windows Explorer navigate to the folder that contains installer package.
2. Right-click the TickerPro.msi file name and select *Install* from context menu appeared.

The first setup dialog you see will be welcome dialog. Press Next button to continue the installation process. The next dialog will display EULA License Agreement of ITOS Ltd.



Please, read this license information carefully and in case you agree with license terms, please select "I Accept the terms in the license agreement" option and then press "Next" button. After you

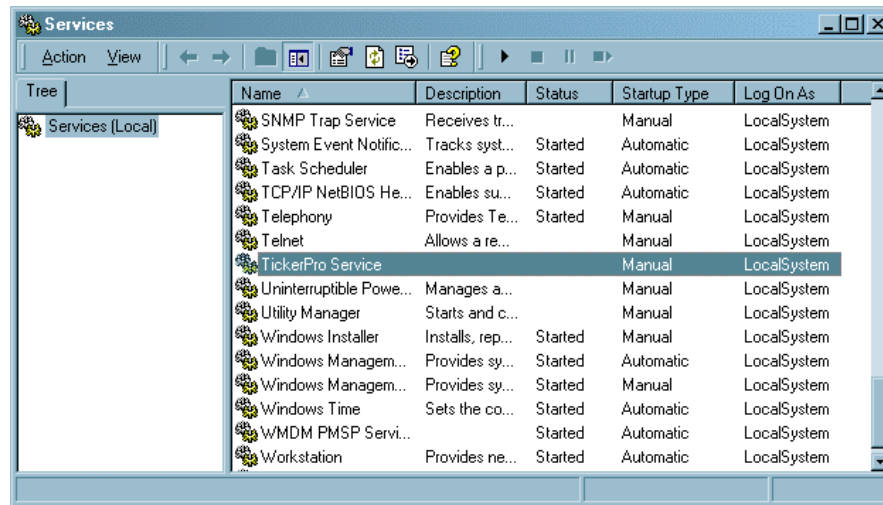
enter customer information you will be prompted to select the installation type – “*Complete*” or “*Custom*”. Complete Installation type will install all software on your computer into the default folder on your hard drive. In case you wish to manually configure installation path and/or select only specified component for installation please select “*Custom*” installation type and Component Configuration dialog will appear.



If you select “**TickerPro Server**” component to install then Installation wizard will install TickerPro Service on your computer. This component may be installed only on Windows 2000 or Windows XP operational system. This service reads and processes real-time data from Microsoft Message Queue Server (MSMQ) queues and operates with connected Excel client.

“**Omega ProSuite Dll extension**” component may be used to extend functionality of Omega ProSuite TradeStation application by adding support of TickerPro Server features. It installs dynamically linked Win32 library that can be used as bridge between RadarScreen or TradeStation and TickerPro MSMQ queues. We have also developed EL Script supplied with installation to help you to integrate this dll into Omega ProSuite.

After “TickerPro Server” component is installed you will be able to see it in the list of existing Windows Services.



By default this TickerPro Service is configured to be started manually under LocalSystem account. If you wish you can change the start-up options of service and set up it to be launched automatically be the system during OS loading. For security reasons you can also change the authority under which service is started.

TickerPro configuration file

TickerPro Server reads input queues from configuration rtd-config.xml file located in the same folder server is installed. By default only one local private queue called “rtd-queue” is specified in rtd-config.xml file. You can add any number of MSMQ queues (remote or local, public or private) and restart the TickerPro Server to start listening data on newly added queues. If the specified queue does not exist TickerPro Server will create it for you automatically during start-up. Below you see the format of XML configuration file with 2 incoming queues – one default “rtd-queue” and one custom public queue located on the server with NetBIOS name “WOLF”.

```
<?xml version="1.0" encoding="UTF-8"?>
<rtd-server>
  <queues>
    <telerate-queue name=".\\private$\\RTD-QUEUE"></telerate-queue>
    <telerate-queue name="OS:WOLF\\RTD-PUBLIC"></telerate-queue>
  </queues>
</rtd-server>
```

Microsoft Message Queue Server (MSMQ)

As it was mentioned above TickerPro Server relies on MSMQ as network transport provider for communication between TradeStations and TickerPro Service. Microsoft® Message Queue Server makes it easy for application developers to communicate with application programs quickly, reliably, and asynchronously by sending and receiving messages.

Follow these steps to install MSMQ 2.0 on a computer that is running Microsoft Windows 2000:

1. In **Control Panel** double-click the **Add/Remove Programs** icon.
2. On the left tab of the Add/Remove Programs window, click **Add/Remove Windows Components**.
3. Once the Windows Components Wizard opens, click to select the Message Queuing Services item. Click Next.
4. This will start the MSMQ 2.0 setup process. Your Windows 2000 and Windows XP installation CD-ROM, network share, or install point must be available.
5. MSMQ will display an installation dialog box. You will be prompted to install either an MSMQ server or a dependent client. Click **Message Queuing Server**.

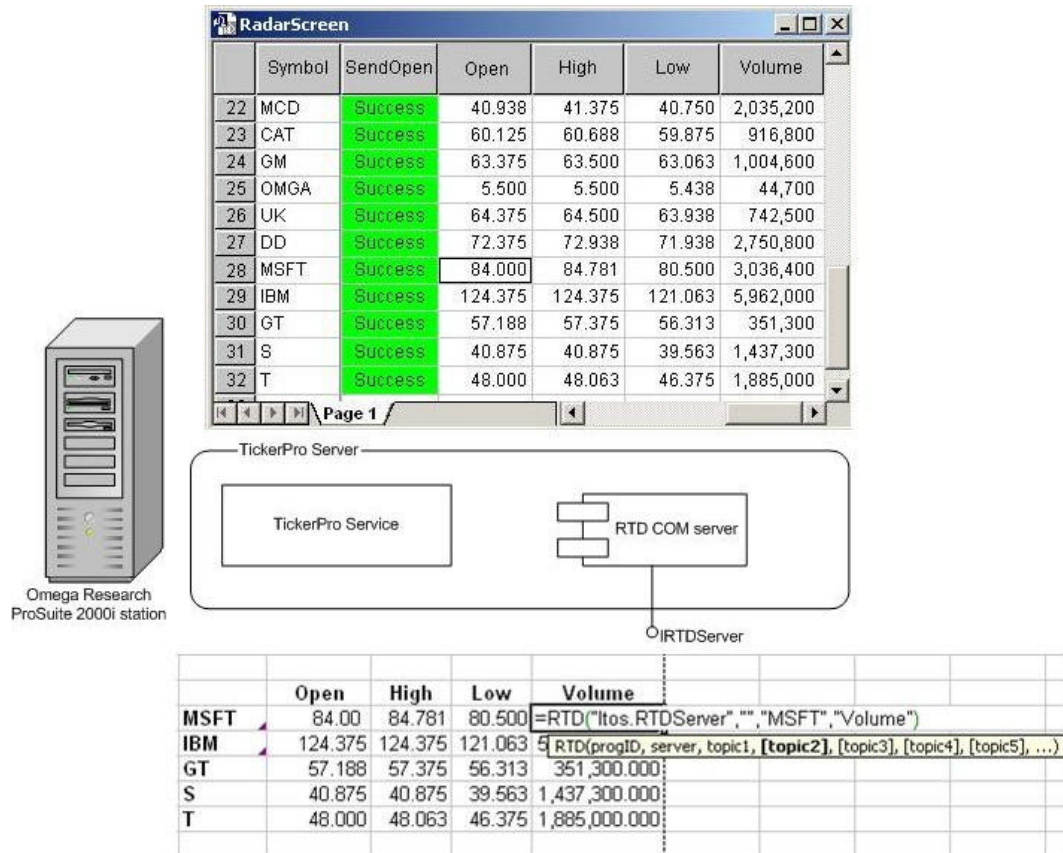
After completing setup, you can see the MSMQ queues and messages under the Computer Management MMC Snap-In, under Administrative Tools:

Computer Management – Services And Applications – Message Queuing

Using TickerPro with Omega Research ProSuite 2000i.

TickerPro Server is solution for transferring data from different sources to client application. As an example we provide solution for Omega Research ProSuite 2000i (ORP) as a source and MS Excel 2002 as a client application.

General architecture of such solution is presented on a picture below. Using "Omega ProSuite Dll extension" installed on ORP station and EasyLanguage script indicator value can be sent to



TickerPro service. Service filters these data and organizes them as topics that could be identified by name. Service also holds pool of COM objects that create real time data channel to MS Excel 2002. These COM objects notify MS Excel 2002 clients about data updates. MS Excel 2002 using built-in RTD functionality can connect to COM object and receive notification about data changes. For example these formula inserted into MS Excel 2002 cell will create connection to COM object located on the same computer and display all changes of "MSFT.Open" topic:

`=RTD("Itos.RTDServer", "localhost", "MSFT", "Open")`

So, for successful using of TickerPro Server with ORP user needs to perform following operations:

- Install TickerPro server to a server, ORP station can be installed on the same server. Process of TickerPro server installation is described above in this document.

- Install ORP Dll extension to the ORP station and import EasyLanguage script with the help of RTD.ELS import file. Installing of these components is also described above in this document.
- On the RadarScreen in existing or new ORP workspace user can add the indicator from the TickerPro installation or create appropriate indicator himself.

After performing these steps user can use MS Excel 2002 as client to track changes in data.

If all software components (TickerPro Server, ORP station and MS Excel 2002) are installed on the same computer than user can open sample RTDTemplate.xls file and see information updated in real-time. RTDTemplate.xls can be found in installation package archive.

After that user can adapt sample RTD.ELS and RTDTemplate.xls for his own needs or using ORP station, TickerPro Server and MS Excel 2002 make new application basing on this files as an example. After registering TickerPro Server user count on qualified help and support by ITOS Ltd in making such applications, in a simple cases we even can provide full solution for free, or at least we can give detailed guidelines and advises to help registered users to realize their plans.

Generally all three components (ORP, TickerPro server, MS Excel 2002) could be installed on different computers or on the same computer in different combinations, e.g. it can be several ORP stations and one TickerPro server, or one ORP station and several TickerPro Servers, or (as you guess already) several ORP stations and several TickerPro Servers. There also can be almost any number of MS Excel 2002 clients.

In case MS Excel 2002 and TickerPro Server are installed on the same computer than no other additional installations required to work from MS Excel 2002 with data provided by TickerPro server, otherwise user need to perform client software installation.